

FOR SALE DEVELOPMENT OPPORTUNITY

KINGSHIGHWAY PARCELS • ST. LOUIS, MO 63110



FEATURES:

- ****DEVELOPMENT OPPORTUNITY****
- 31,000 SF total ground
- 7 parcels available:
 - 1074 S Kingshighway Blvd
 - 1076 S Kingshighway Blvd
 - 1080 S Kingshighway Blvd
 - 1084 S Kingshighway Blvd
 - 1086 S Kingshighway Blvd
 - 1092 S Kingshighway Blvd
 - 4575 Oakland Ave

SALE PRICE: \$1,000,000.00

TOM WEILER

314.308.3194

tweiler@savoyproperties.com

RYAN PENNINGTON

314.446.2903

rpennington@savoyproperties.com

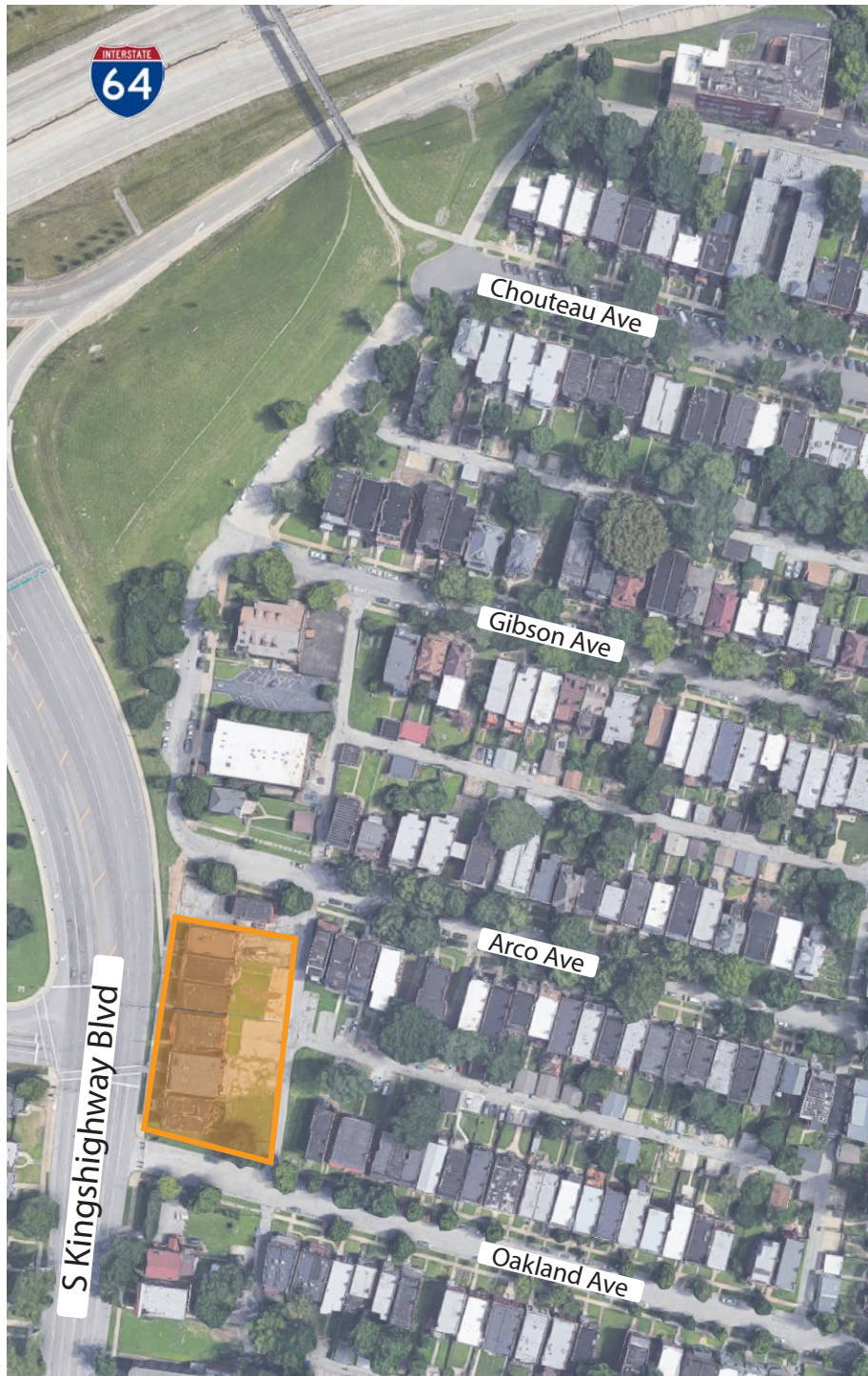
SAVOY
PROPERTIES

Savoy Properties · 1034 S Brentwood Blvd, Suite 1200 · St. Louis, MO 63117 · p: 314.909.8400 · f: 314.909.8406 · www.SavoyProperties.com

The information above has been obtained from sources we believe to be reliable. However, we have not verified its accuracy and make no guarantee, warranty or representation about it. It is submitted subject to the possibility of errors, omissions, change of price, rental or other conditions, prior sale, lease or financing, or withdrawal without notice. We include projections, opinions, assumptions or estimates for example only, and they may not represent current or future performance of the property. You and your tax legal advisors should conduct your own investigation of the property and transaction.

FOR SALE DEVELOPMENT OPPORTUNITY

KINGSHIGHWAY PARCELS • ST. LOUIS, MO 63110



TOM WEILER
314.308.3194
tweiler@savoyproperties.com

RYAN PENNINGTON
314.446.2903
rpennington@savoyproperties.com



Savoy Properties · 1034 S Brentwood Blvd, Suite 1200 · St. Louis, MO 63117 · p: 314.909.8400 · f: 314.909.8406 · www.SavoyProperties.com

The information above has been obtained from sources we believe to be reliable. However, we have not verified its accuracy and make no guarantee, warranty or representation about it. It is submitted subject to the possibility of errors, omissions, change of price, rental or other conditions, prior sale, lease or financing, or withdrawal without notice. We include projections, opinions, assumptions or estimates for example only, and they may not represent current or future performance of the property. You and your tax legal advisors should conduct your own investigation of the property and transaction.